



A Framework for Fast Development of Customized Telehealth Applications

Baptiste Alcalde
eHealth Institut
FH JOANNEUM
Graz, Austria

baptiste.alcalde@fh-joanneum.at

Lukas Wechtitsch

Independent

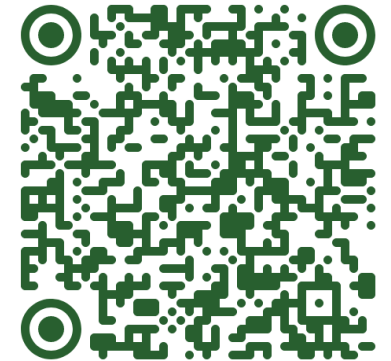
Graz, Austria

wechtitsch.lukas@gmail.com



BSc. Computer Science
MSc. Software engineering
MSc. Computer Networks
PhD. Computer Science

Fraunhofer Gesellschaft – Berlin
University of Luxembourg – Luxembourg
SSI-Schäfer – Graz
University of Applied Sciences – Graz

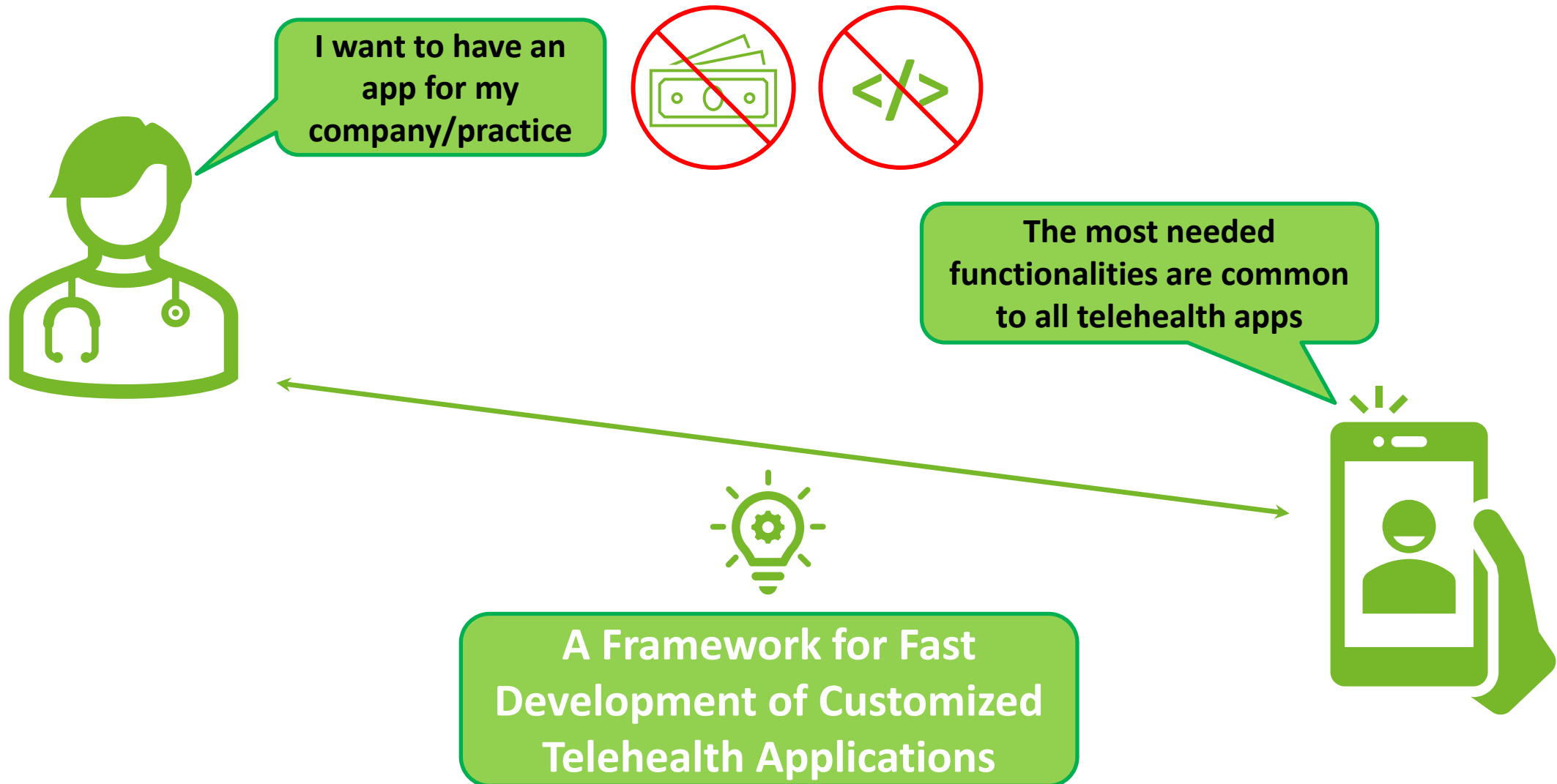




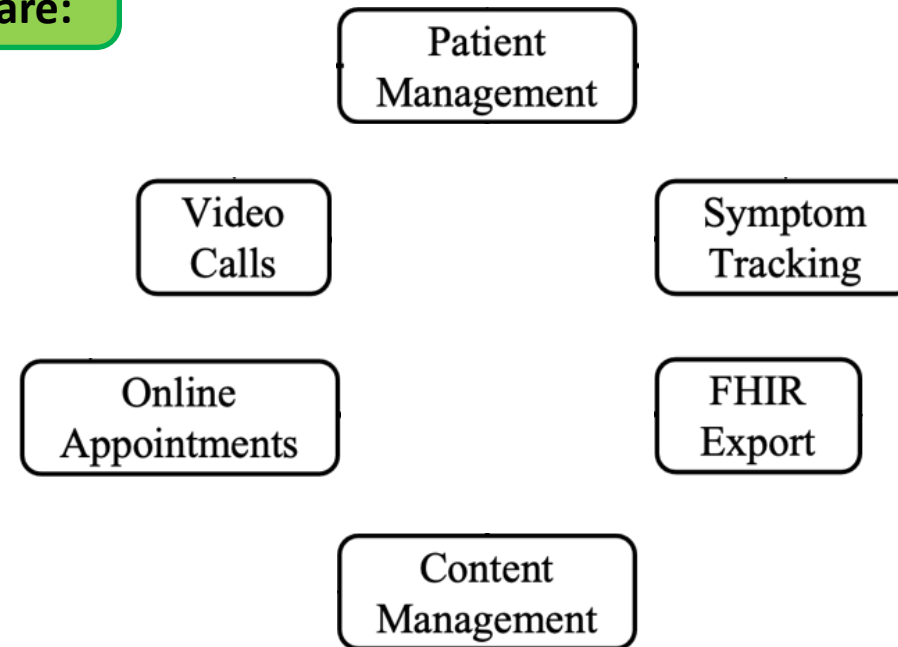
<https://trialsathome.com/>

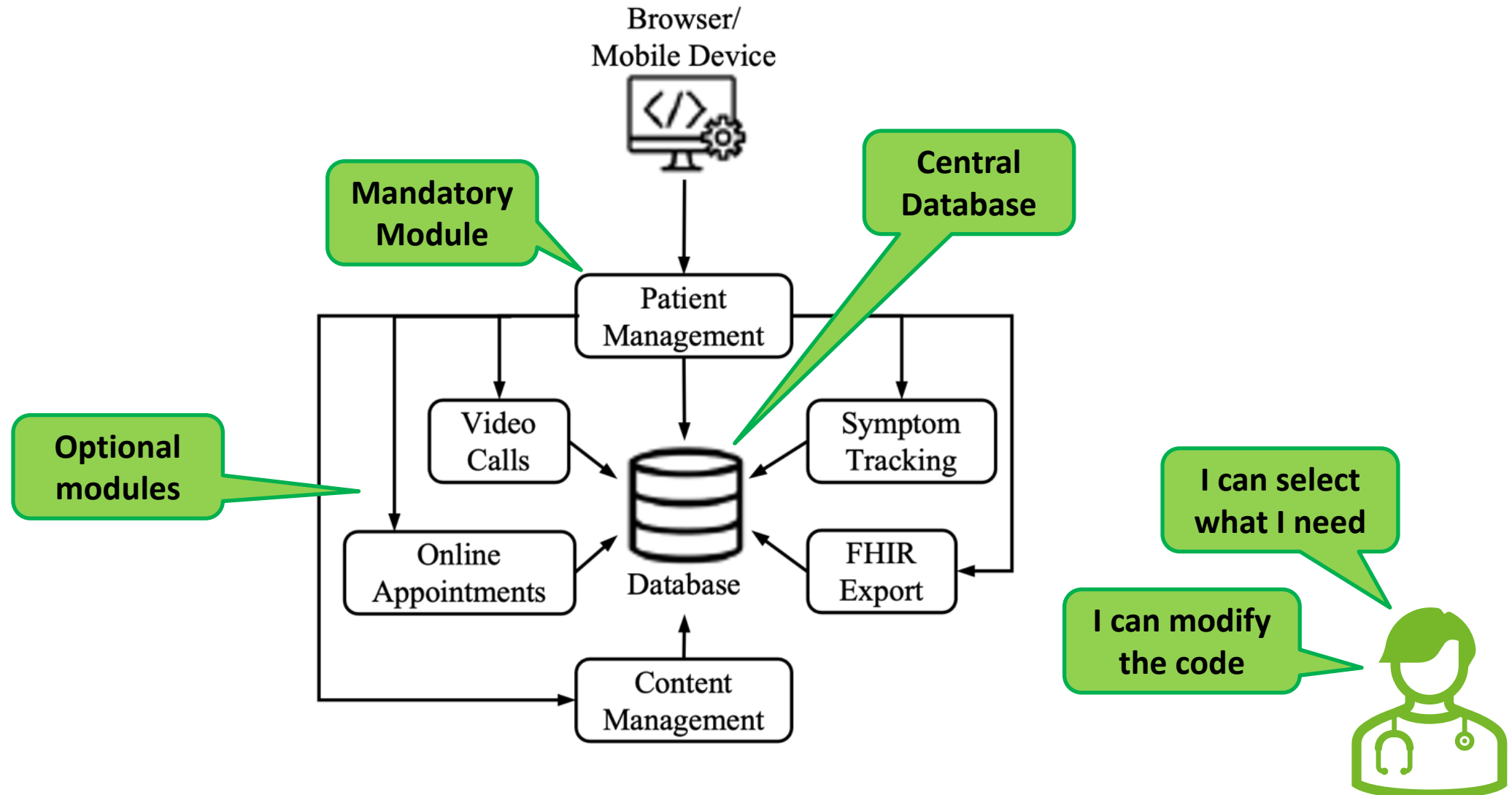


<https://www.lethe-project.eu/>

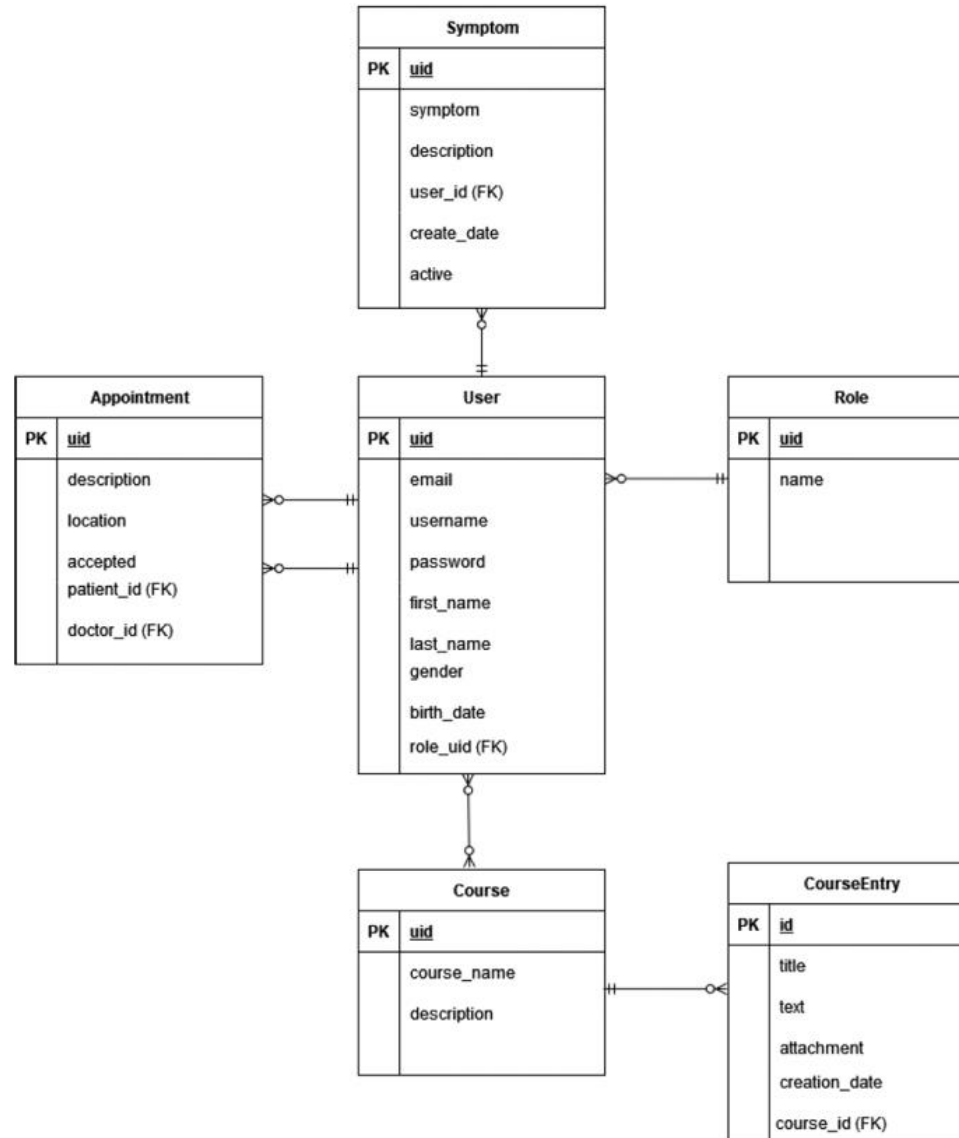


Common functionalities
of telehealth apps are:





Architecture of
the default
database



Further
functionalities

Standards for data
interoperability

Containerize
(Docker/K8s)

Business
model



Questions?