



WWW.IARIA.ORG

PANEL
...on Software and Data

Theme: Designing Complex Systems
Topic: Machine Learning and Visual Data

MODERATOR:
Petre Dini, IARIA

petre@iaria.org

Petre

- (partially) **retired** | (mostly) **volunteering** | enjoying (affordable) **traveling**
- **Past topics**: mathematics, VLSI, formal languages, protocol V&V, real-time embedded systems, nomadic code, active routing, software arch, (AT&T) IMS, (Cisco) IOS, Fault Mgr, Performance Mgr, ...Data, Learning,....
- **Academics**: U de Montreal, Concordia U, McGill U | (AT&T) Stanford, (Cisco) Berkeley, China Space Agency Center - Beijing | Cisco-IBM Coop Dir., AT&T-Cisco Coop. Dir.
- **Industrial/research**: BNR (Nortel R&D), CRIM (R&D), AT&T, Cisco Systems, Inc.
- **Salient**: 19 US Cisco patents, (co)supervisor: 38 Master&PhD
- **Current hobbies**: self-x, systems/apps adaptation, conflicts in decision policies, crowd-in-the-middle, reflective architectures, new trends in software development (apps)
- **Open**: how can a piece of software can realize by itself (or by any other means) that a copy of that piece was (? illegally) made somewhere [**see CLOUD**]
- **Still learning ...from you!**
- **Yet, playing: 4 grandkids, my neighbors**

Keywords Invasion

- Machine Learning
- Deep Learning (Neuronal Networks, Sandwich, etc.)
- Data Visualization (Uni-, Multi-variables, Links)
- Semantic Gap/Semantic Matching
- Ontologies/Taxonomies
- Prediction/Intuition/Data Analytics/Data Science
- Advanced Artificial Intelligence
- Accelerated Deep Learning/Deep Thinking
- Data Orchestration (open data, data sets, visible/hidden links)
-
- Brain-Like computing (*neuromorphic computing* mimics the brain's structure)
- Intelligent-Analysis-as-a-Service
- Prediction-as-a-Service
- Data Science

Data and Learning

Artificial Intelligence

Reasoning

Natural
Language
Processing
(NLP)

Planning

Machine Learning

Supervised
Learning

Unsupervised
Learning

Reinforcement
Learning

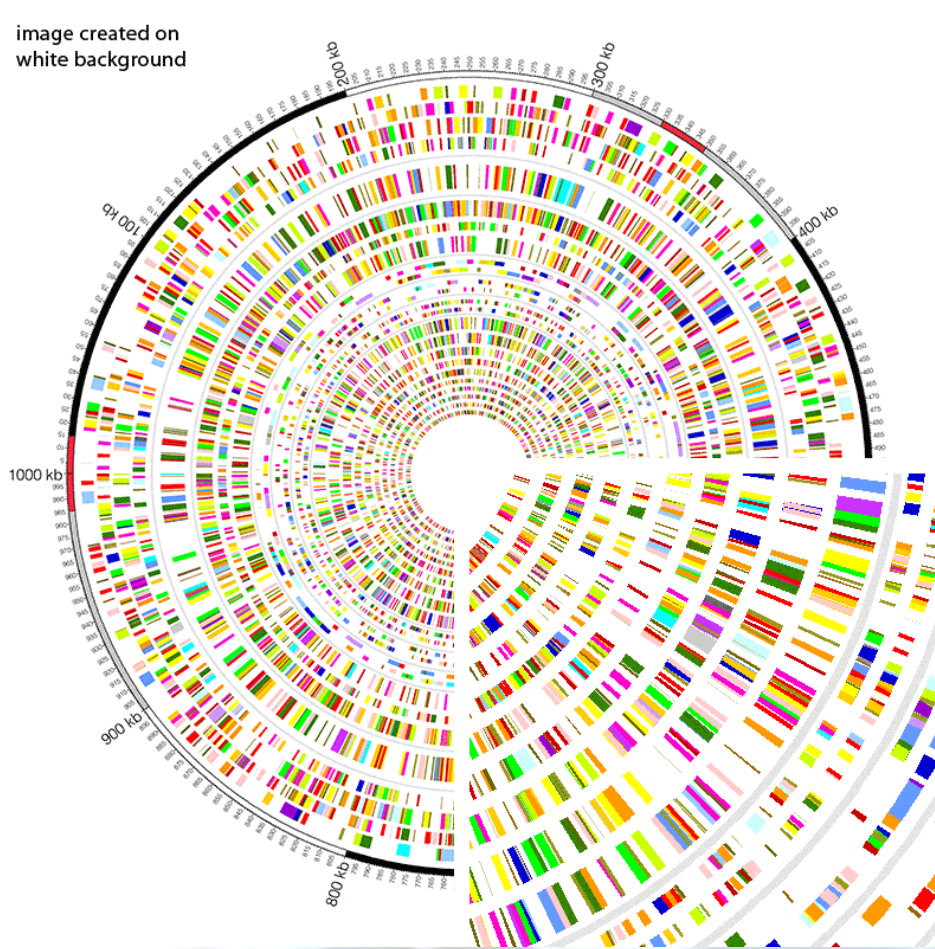
Deep Learning
• Neural Networks

credit: <https://www.ibm.com/analytics/machine-learning>

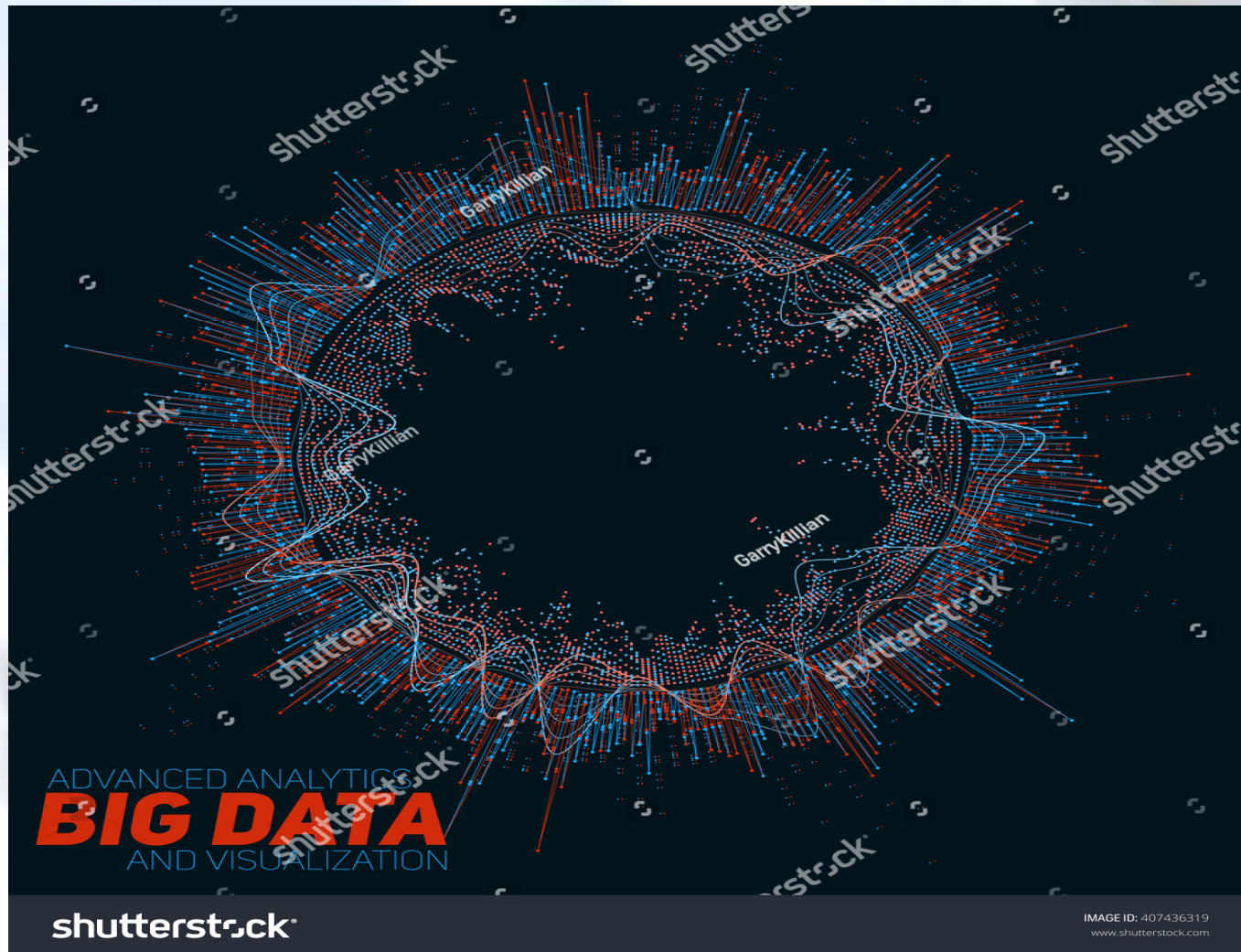
BIG | the Vs | 3v, 5v, 7v, 10v, ?

- **Volume** (length of a records, # of records) (entity-relationship databases)(datasets) || **BIG vs. HUGE**
 - **Variety** (types: strings, pictures, voice, etc.) (structured, non-structured)
 - **Veracity** (**precision** and **accuracy** of data)
 - **Velocity** (of change)
 - **Value** (as a business/service) **IMPACT**
 - **Volatility** (temporary; quick action)
 - **Vasting resources**
(storage, computation, transfer)
 - **Viability** (are data still useful?)
 - **Visibility** (open, hidden, ..)
 - **Validity**
(are there still valid/updated data?)
(in context validity)
(e-government datasets)
-
- incomplete
- redundant
- inconsistent
- noisy
- quality of data
- filling missing values with estimated values
calculated for complete records of the same dataset

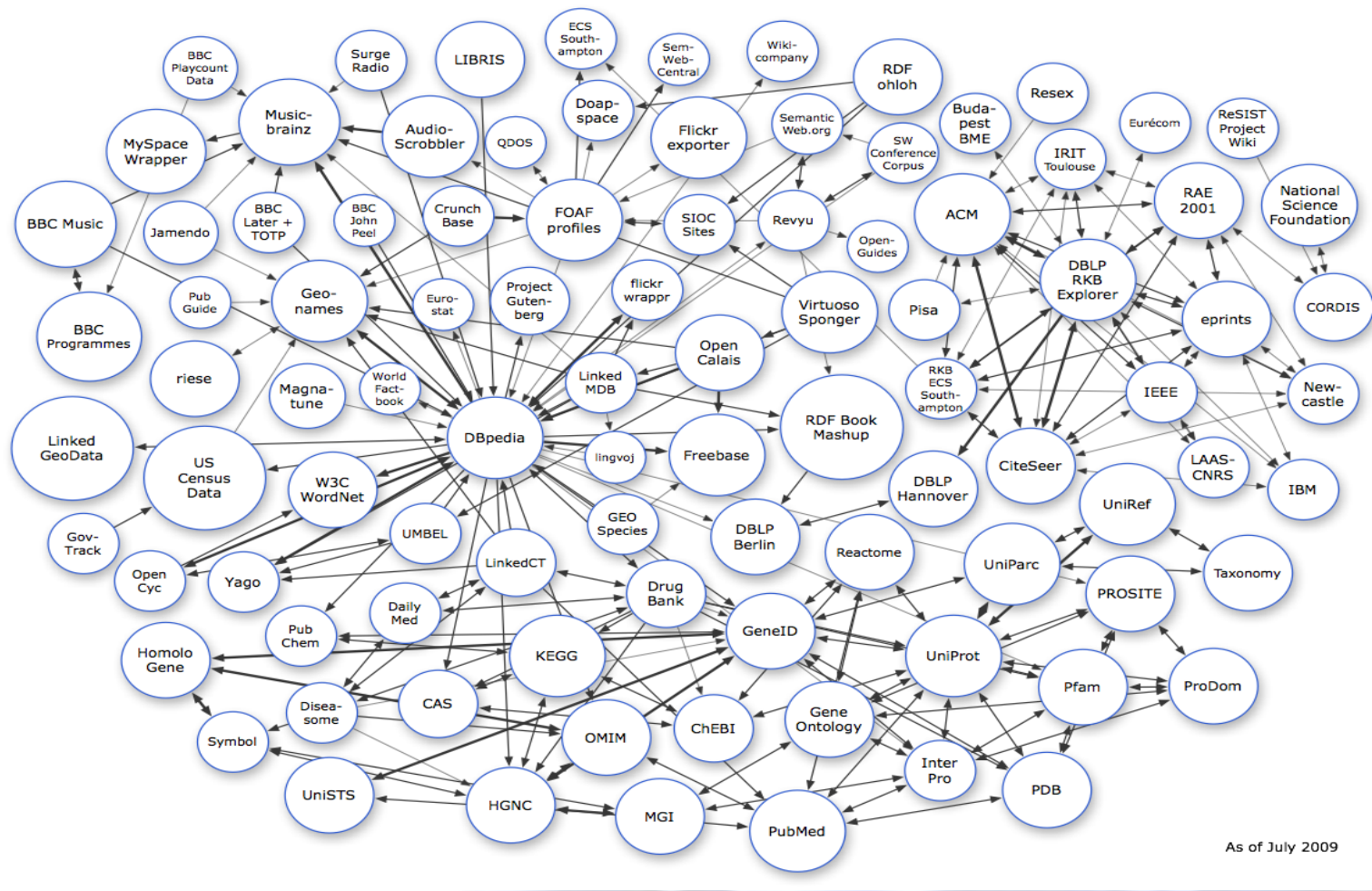
Big/Huge Data Visualization



Big Data Clusters

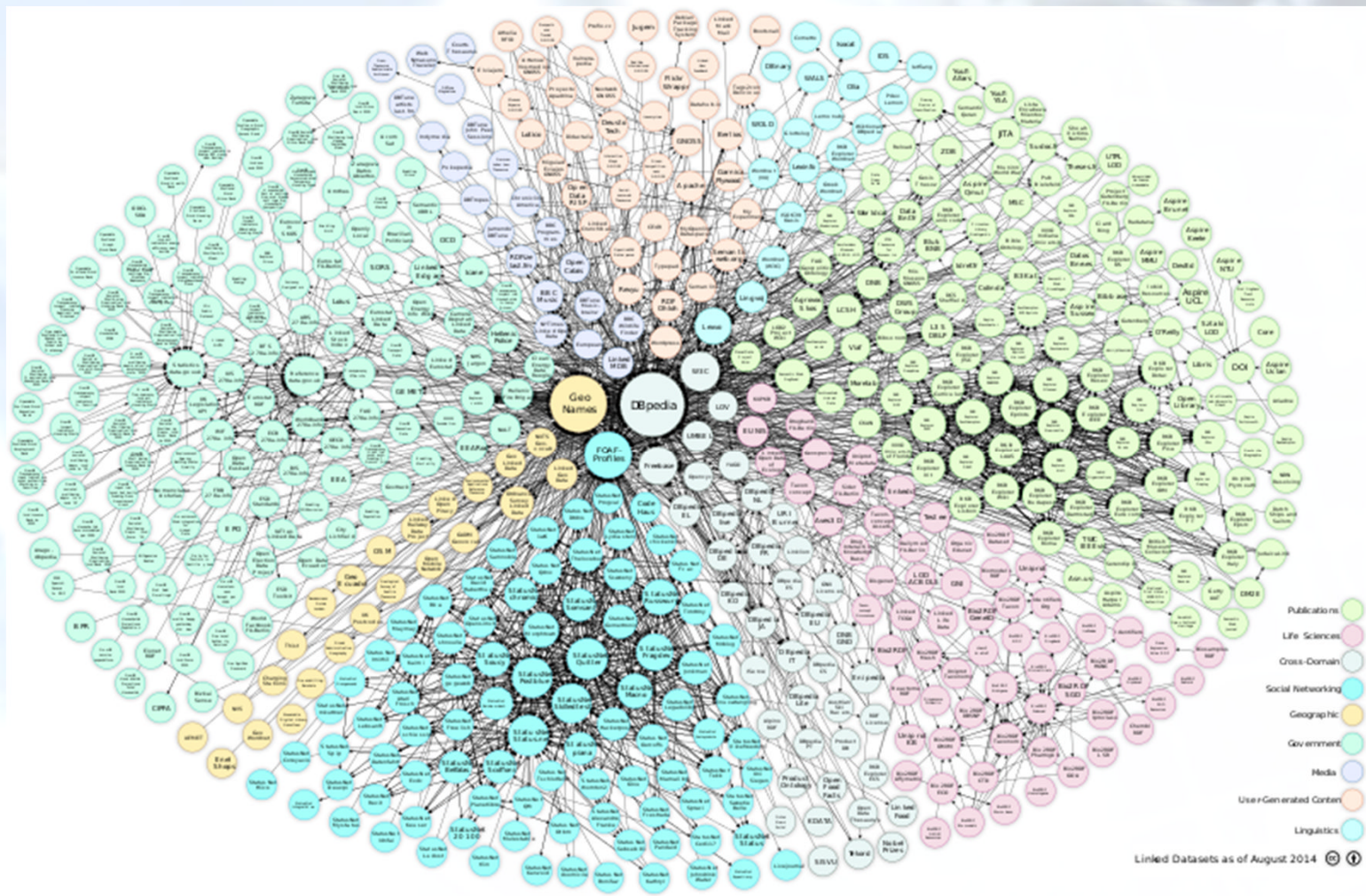


Linked Big Data



credit: <https://neuinfo.org/about/nifblog/521>

Linking Open Data datasets



credit https://en.wikipedia.org/wiki/Linked_data#/media/File:LOD_Cloud_2014-08.svg

Panelists

Moderator

Petre Dini, IARIA, USA

Panelists

- Maaïke de Boer, TNO, The Netherlands
Explainable Artificial Intelligence
- Marco La Cascia, University of Palermo, Italia
Deep Learning and the Semantic Gap
- Tsan-Sheng Hsu, Institute of Information Science, Academia Sinica, Taiwan
Deep Learning and Knowledge underneath the Data | Playing Rules and "Intelligence" Learned in Complex Applications
- Hiroshi Ishikawa, Tokyo Metropolitan University, Japan
From Data Science to Science-disciplined Data Analysis

Planning

- **Stage for the panelists**
- **Open discussion**
- **Concluding remarks**
- **Next panel topic | end of Feb, 2020, Lisbon**



WWW.IARIA.ORG

From data science to science- disciplined data analysis

Hiroshi Ishikawa

Director, Research center for social big data

Tokyo Metropolitan University

Tokyo, Japan



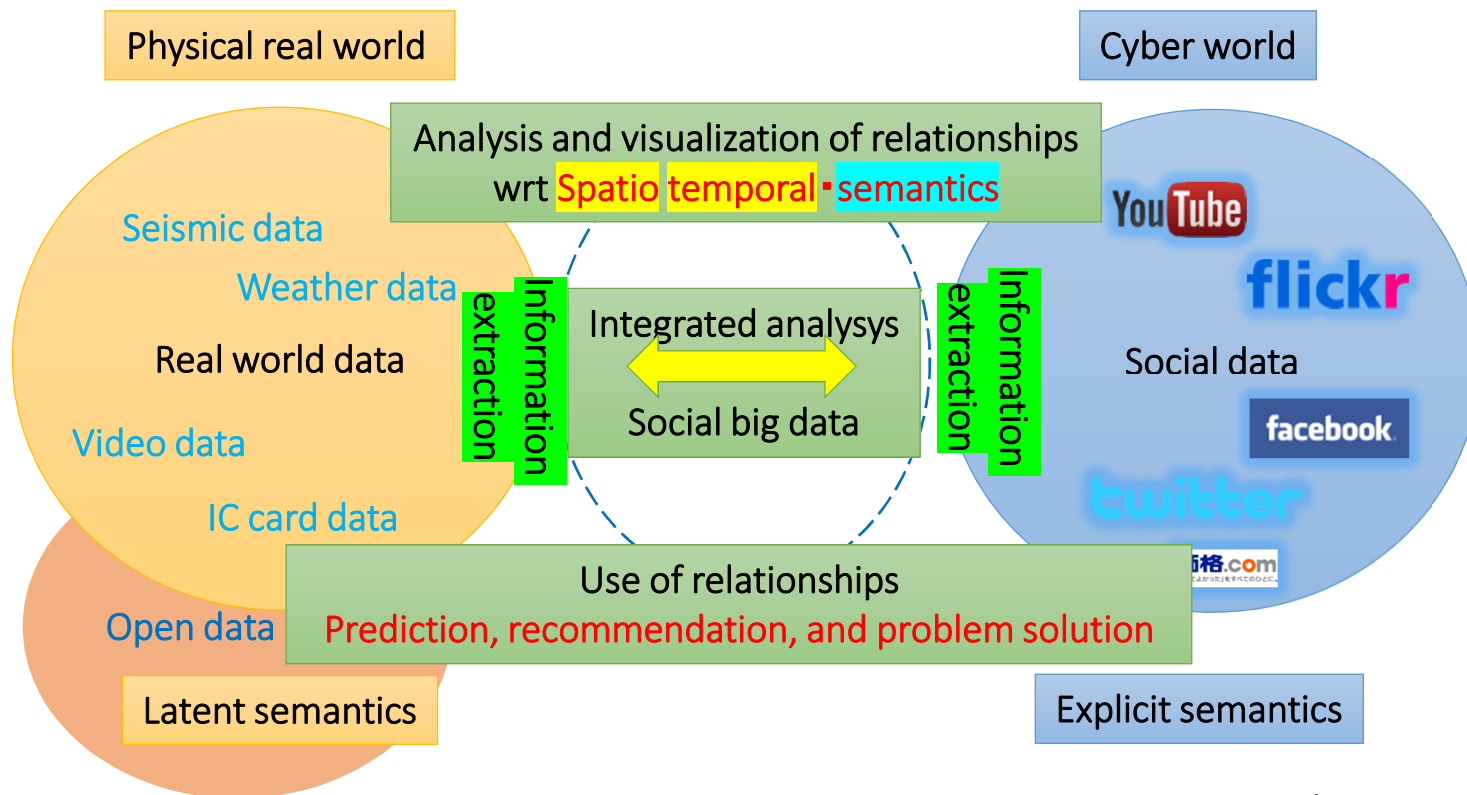
首都大学東京

TOKYO METROPOLITAN UNIVERSITY



Integrated analysis of real world data and open data, social data

“Ishikawa’s concepts” (Olshannikova et al 2017)



- Ekaterina Olshannikova et al, Conceptualizing Big Social Data, Journal of big data, Springer, Vol.4, No.3, pp.1-19, 2017.

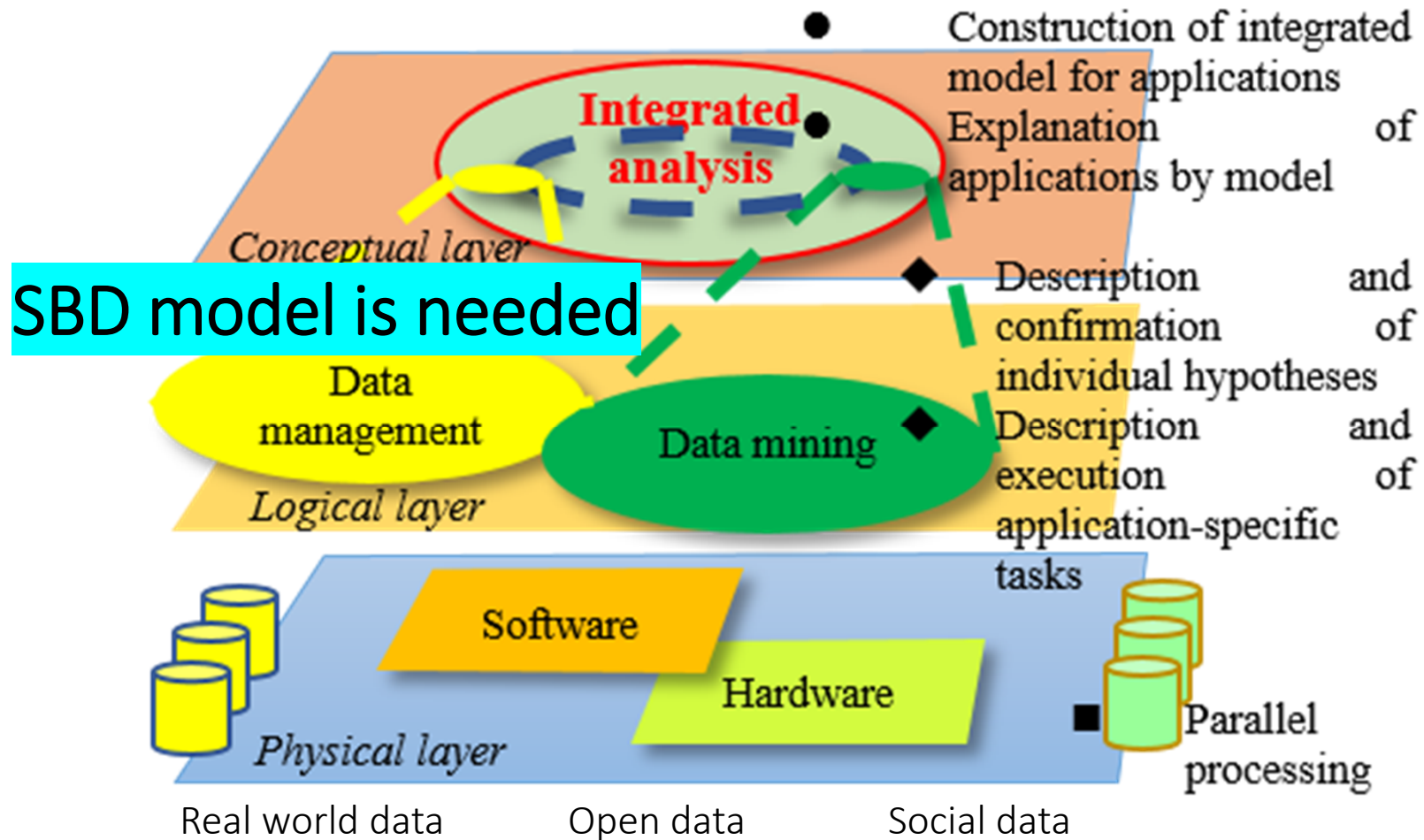


Social big data (SBD) in summary

- In social big data applications, especially, cases where two or more data sources including at least one social data source are involved, are more interesting from a viewpoint of usefulness to businesses.
- If more than one data source can be analyzed by relating them to each other, and by paying attention to the interactions between them, it may be possible to understand what cannot be understood, by analysis of only either of them.
- By collecting those articles and images based on conditions specified with respect to locations and time intervals and counting them for each grid (i.e., unit location), probabilities that users post such data at the locations can be basically computed.
- By using such probabilities, for example, human activities can be analyzed such as probabilities of foreigners staying at specific spots or those moving from one spot to another.



Reference architecture for social big data



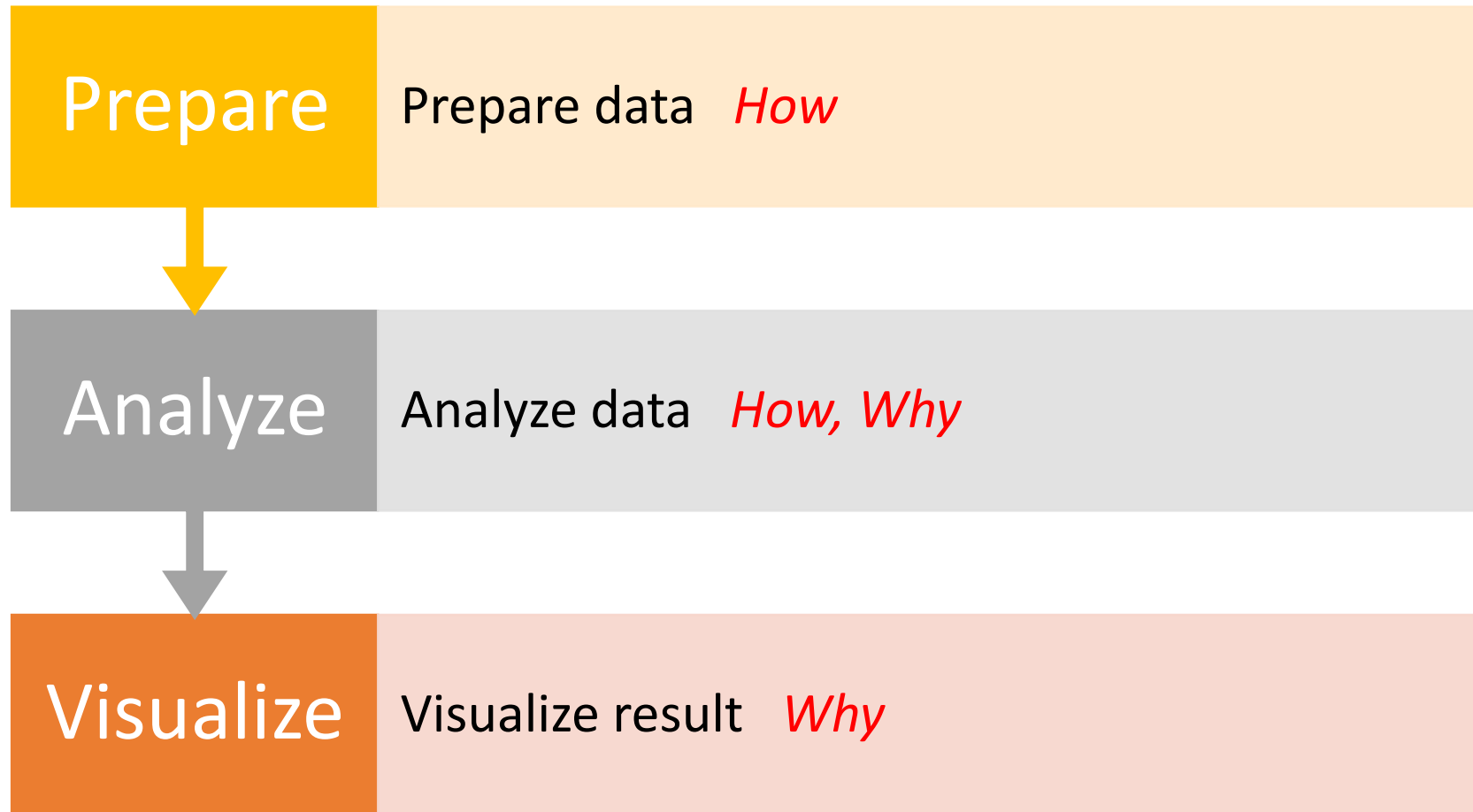
Requirements of our SBD model

- Description of SBD applications must be as independent from individual programming languages and frameworks (e.g. Spark and MLI) as possible.
 - it is not always possible for all researchers to access the same data and tools that the authors have used.
 - In other words, by enabling the mapping from description of applications by an abstract *SBD model* to individual tools available for the other researchers, reproducibility [Südhof 2016] can be realized even if the tools are not the same with the original one.
- Both data management and data mining must be described in an integrated manner.
 - In SBD applications, a lot of time is spent on development and execution of data management including preprocessing and postprocessing in addition to data mining.
 - Further, data management and data mining cannot be always separated in a crisp manner.
 - Rather, most SBD applications require hybrid processes mixed with data management and data mining.

Thomas C. Südhof, Truth in Science Publishing: A Personal
Perspective *PLOS* August 26, 2016.



Whole processes of SBD applications in general require explanation



Necessity of an integrated framework for explanation



In order for social big data to widely be used, it is necessary to explain the user the application system.



Both **microscopic description**, that is, interpretation of the analytical model and explanation of individual decisions and **macroscopic description**, that is, description of the whole processes including the data manipulation and the model construction are required.



From the development experiences of multiple use cases, we have come to think that both the **macro explanation based on the proposed data model** in this paper and the **micro explanation emerging in AI** are urgently needed.



A macro explanation is necessary for the following reasons.

- In order for social big data applications to be accepted by users, it is necessary to ensure at least their reliability. Since information science is one area of science, we should **guarantee reproducibility as science**. In other words, it is necessary to ensure that third parties can prepare and analyze data according to given explanation and can get the same results.
- In addition, in order for the service to be operatable, it is **necessary for the final user of the service to be convinced of how the service processes and uses the personal information**.
- If the users can be convinced of the description of way of using the personal information, the progress of data portability can be advanced based on the EU's GDPR law on personal information protection and Japan-based information bank to promote the use of personal information.



A micro explanation is necessary for the following reasons.

- In order for **analysts of social big data and field experts** using the data to accept decisions made by the constructed model, it is assumed that they **must understand the structure, actions and grounds of the model and are satisfied with them as well.**
- Up to now, the authors have been involved in **the development of a wide range of social big data use cases ranging from tourism, disaster prevention to lunar and planetary science.**
- In the course of these processes, **from the users of the use cases, we have often received questions as to what kind of data are processed, what kind of model are created as the core of analysis, and furthermore, what are the grounds for the decisions.**





EXPLAINABLE DATA SCIENCE

Maike de Boer, TNO

TNO innovation
for life

WHY EXPLAINABLE AI?

- › With the recent advances in deep learning, it becomes more and more important to create transparency in order to gain trust in the AI systems.
- › This can be done by
 - › Opening up black box models
 - › Using model-agnostic algorithms
 - › And many more methods



DISCUSSION POINTS

- › We should have explainability at all cost, even if it implies lower performance
- › The human in the loop is the key to explainable AI
- › Using model agnostic algorithms is better than creating new deep learning algorithms that are more transparent

A nighttime photograph of a city street. In the foreground, a modern, curved pedestrian walkway with a glass railing is illuminated. The background shows multi-story buildings with lit windows and long, horizontal light trails from moving vehicles, creating a sense of motion and urban energy.

› **THANK YOU FOR YOUR
ATTENTION**

Take a look:
TNO.NL/TNO-INSIGHTS

TNO innovation
for life



UNIVERSITÀ
DEGLI STUDI
DI PALERMO



Deep learning and the semantic gap

Marco La Cascia

Università degli Studi di Palermo

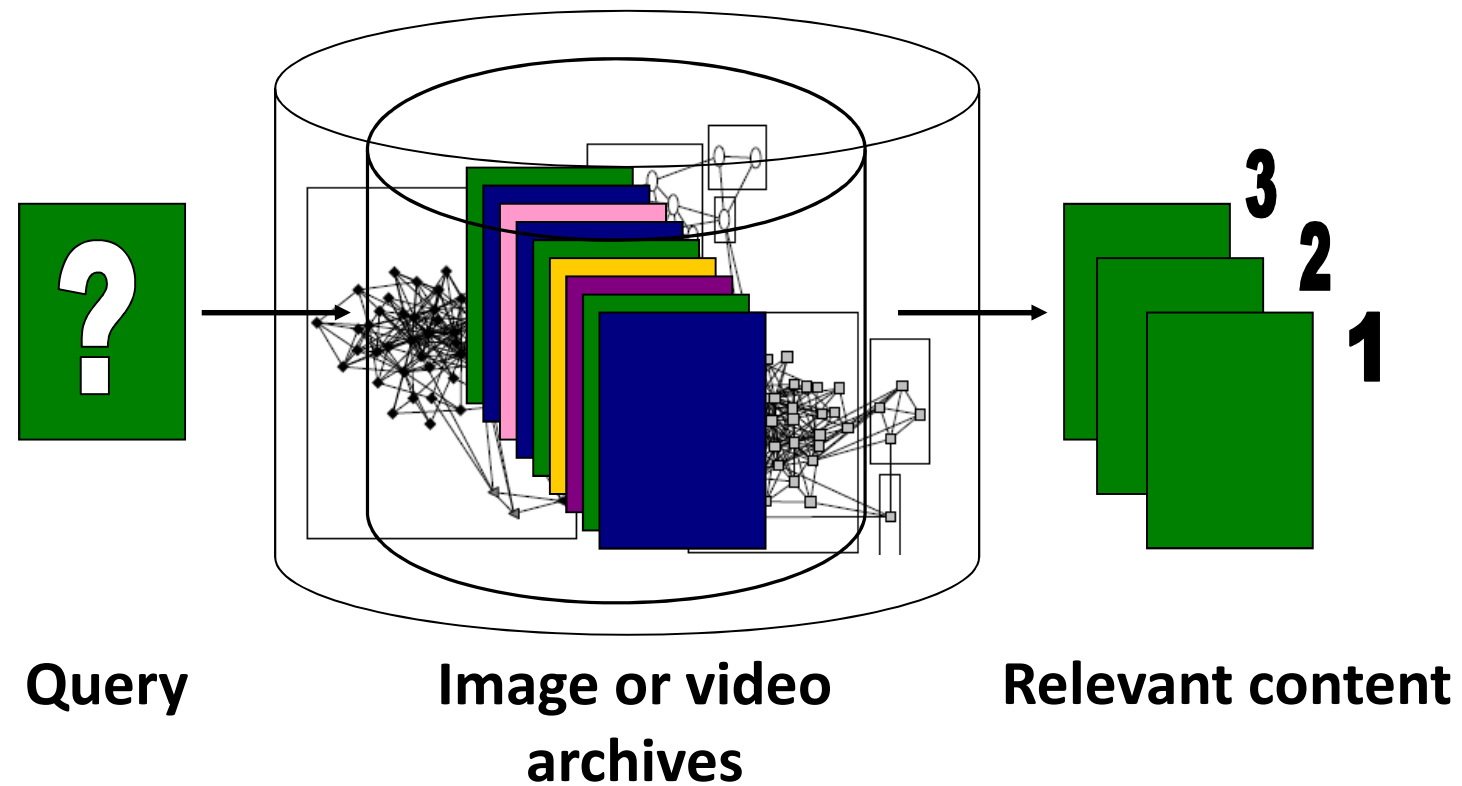
Dipartimento di Ingegneria

Data, information and knowledge

- “We are drowning in information but starved for knowledge”
[Naisbitt 1982] John Naisbitt. Megatrends. Warner Books, Inc. (1982)
- Today, we are drowning in data and starved for information.
- Lot of data... but how much of that data will actually be useful?

What about visual data? Much worse...

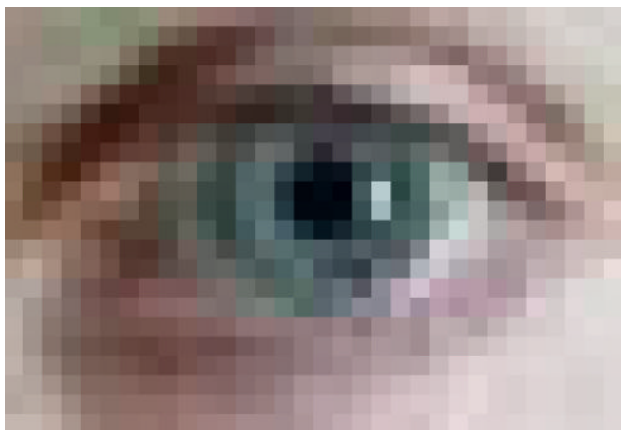
Visual search, organization



What the computer gets



1	82	87	88	88	88	88	89	89	88	89	89	89	89	89	90	90	90	90	89	89	89
2	95	94	94	95	95	95	94	95	95	95	95	95	96	96	96	96	96	96	96	96	96
3	89	92	92	92	92	92	93	93	93	93	93	93	93	93	93	93	93	93	93	93	93
4	98	98	98	98	98	99	99	99	99	99	100	100	99	100	101	101	101	101	100	100	101
5	99	99	100	100	100	100	99	100	101	101	101	102	102	102	102	102	102	102	102	102	102
6	91	95	94	96	96	94	95	95	95	95	94	95	95	95	95	96	96	96	96	97	97
7	101	101	102	102	102	102	102	102	102	102	103	103	103	103	103	103	103	103	103	103	103
8	92	97	96	97	97	97	97	97	97	97	97	97	97	97	97	97	98	98	97	98	98
9	103	102	103	102	103	103	103	103	103	104	104	104	104	104	104	104	104	104	104	105	105
10	93	97	98	98	98	98	98	98	98	98	98	98	98	98	98	98	98	98	99	99	99
11	103	103	104	104	104	104	104	104	104	105	106	106	106	106	106	106	106	105	105	105	105
12	95	99	98	99	99	99	99	99	100	100	99	101	101	100	100	101	100	100	100	100	100
13	104	104	105	106	105	105	105	106	107	106	107	107	107	107	107	107	107	108	108	107	108
14	96	100	100	100	102	102	102	102	102	102	102	102	102	102	102	102	102	103	102	103	103
15	107	107	107	107	107	107	107	107	108	108	108	108	109	108	109	109	108	109	109	109	109
16	98	102	102	102	102	103	103	103	103	103	103	103	103	103	103	103	103	104	104	103	103
17	108	108	108	109	109	109	109	109	109	109	109	109	110	109	110	111	111	111	111	111	111
18	100	103	103	103	103	104	104	104	104	104	104	104	104	104	104	104	105	105	106	105	105
19	109	109	109	109	110	109	110	110	110	110	110	111	111	111	112	112	112	112	112	113	113
20	101	104	104	105	105	106	106	105	105	105	106	105	106	107	107	106	107	107	107	107	107
21	111	111	112	111	112	112	112	112	112	112	112	112	112	113	113	113	113	114	113	114	114
22	102	106	107	107	106	107	106	107	108	107	108	108	108	108	108	108	108	108	108	108	108
23	113	113	113	113	113	113	114	114	114	113	114	114	114	114	115	115	115	115	115	115	115
24	105	108	108	108	108	108	108	109	109	109	109	109	109	110	110	109	109	109	109	109	109
25	114	114	114	114	114	114	114	115	116	115	115	115	116	117	116	117	117	117	117	117	117
26	106	109	109	109	109	110	110	110	110	111	111	110	111	111	112	112	111	111	111	112	111
27	116	116	116	116	116	116	117	117	117	117	117	118	118	118	118	118	118	118	118	118	118
28	108	111	110	110	110	111	111	112	111	112	112	113	113	113	113	113	113	113	113	113	113
29	117	117	118	118	118	118	118	118	119	118	120	120	119	119	119	119	119	119	119	119	119
30	110	113	111	113	113	113	114	114	114	114	114	114	114	114	115	115	114	115	115	115	115
31	119	119	119	119	119	120	120	120	120	120	120	121	121	121	121	121	121	121	121	122	122
32	111	114	114	114	115	115	115	115	115	116	116	117	116	117	116	117	117	117	117	117	117
33	121	120	120	120	121	120	121	122	122	121	126	130	122	122	122	123	123	123	123	123	123
34	112	117	117	117	117	117	118	118	118	118	118	118	118	118	118	118	118	118	118	118	118
35	122	122	123	122	123	123	123	123	123	124	124	123	127	124	124	124	125	125	125	125	124
36	114	117	118	118	118	119	114	122	120	119	119	120	119	120	119	119	120	121	120	120	120
37	124	124	124	124	125	125	125	126	125	125	126	127	125	125	126	127	127	127	127	127	127
38	116	119	119	120	120	120	121	119	137	123	122	121	122	121	122	121	122	122	122	122	122
39	125	125	126	126	127	127	127	127	126	121	129	128	128	128	129	129	128	129	129	129	129
40	117	120	121	122	122	123	123	121	145	128	122	123	123	124	124	124	124	124	124	124	124



153	156	148	152	149	147	139	146	142	150	146	144	137	125	120	119	136	146	151	164	172	175
159	151	150	148	140	138	139	129	119	104	86	82	89	97	107	115	118	130	128	132	128	144
149	146	153	147	147	146	132	99	73	78	87	96	105	120	138	151	145	157	163	171	165	161
145	150	154	148	148	126	93	67	72	78	96	107	117	127	131	134	127	154	166	167	183	194
151	153	151	147	120	85	67	75	84	83	94	92	81	78	78	91	83	117	126	144	178	200
146	144	139	123	79	66	74	83	79	69	64	62	58	50	46	54	54	66	60	80	86	108
135	130	115	87	64	77	90	79	78	85	81	63	55	57	56	53	70	62	61	68	59	58
128	116	92	71	82	94	103	101	83	101	88	66	70	90	80	42	39	53	88	73	76	82
135	120	84	83	108	127	135	115	100	92	79	49	85	74	59	0	0	0	50	69	52	79
144	103	91	115	139	147	127	91	87	80	72	44	61	84	25	0	0	0	50	181	45	69
139	102	123	143	137	131	109	85	93	84	68	47	77	86	31	0	3	0	51	156	53	75
141	135	153	142	114	104	97	97	83	98	77	42	77	96	79	21	0	23	58	46	56	77
160	172	164	141	128	112	98	95	100	96	91	73	68	86	75	73	64	65	54	69	77	115
179	189	160	140	139	116	97	97	108	103	110	99	75	80	72	83	50	55	54	95	98	174
189	183	152	130	121	105	105	117	114	108	107	115	110	81	85	85	87	81	81	124	183	202
178	161	149	135	120	115	122	129	137	145	131	121	125	115	109	91	92	111	132	159	173	170
187	159	139	127	125	115	118	121	121	131	133	134	140	137	134	139	140	152	141	154	170	163
185	164	140	122	116	110	109	108	113	118	115	116	123	127	135	148	154	162	165	170	171	160
188	175	150	130	118	117	113	110	108	115	117	123	130	132	138	150	157	158	174	182	189	186
187	179	158	141	124	127	125	127	126	129	130	135	139	141	150	165	174	182	185	195	207	210
188	184	172	159	138	135	135	143	143	143	144	146	145	147	160	174	184	191	199	207	211	213
192	191	187	174	153	139	140	147	146	149	157	162	160	159	165	174	181	198	201	210	212	216

Challenges: Complexity

- Thousands to millions of pixels in an image
- 3,000-30,000 human recognizable object categories
- 30+ degrees of freedom in the pose of articulated objects (humans)
- Billions of images indexed by Google Image Search

About half of the cerebral cortex in primates is devoted to processing visual information [Felleman and van Essen 1991]

Early years of CBIR

- QBIC (IBM) early 90
 - Image processing for retrieval by color, texture, and local geometry
- PhotoBook (MIT) mid 90
 - Semantic preserving image compression (eigen-features)
- ImageRover (BU) late 90
 - Mixing text and low-level image information
- Many others
 - Accumulative and global features, salient points, object and shape features, signs, and structural combinations
 - Similarity of pictures and objects in pictures

[Smeulders et al. 2000] Smeulders, A.W.M. Worring, M. Santini, S. Gupta, A. Jain, R.: Content-Based Image Retrieval at the End of the Early Years. IEEE Transactions on Pattern Analysis and Machine Intelligence. vol. 22, No. 12. pp. 1349-80. (2000)

The semantic gap

- The lack of coincidence between the information that one can extract from the visual data acquired from an image and the interpretation that the same data have for a user in a given situation.

[Smeulder et al. 2000]

Difference between low-level representation of an image and high-level human perception

And then?

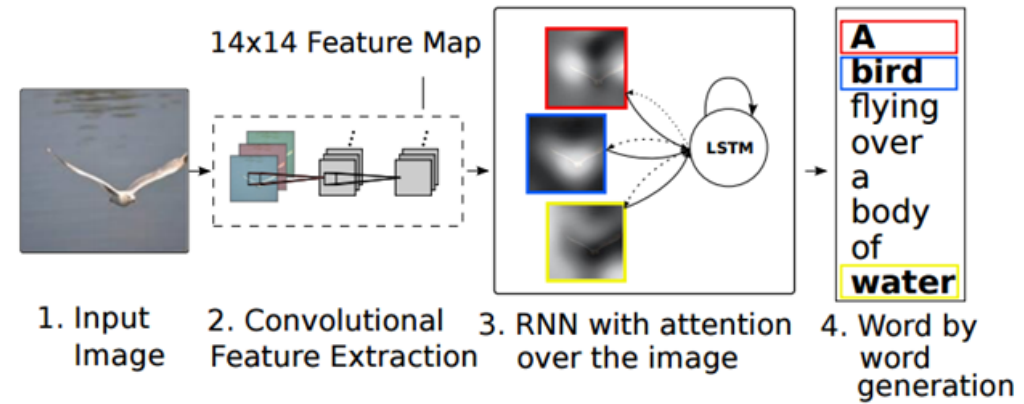
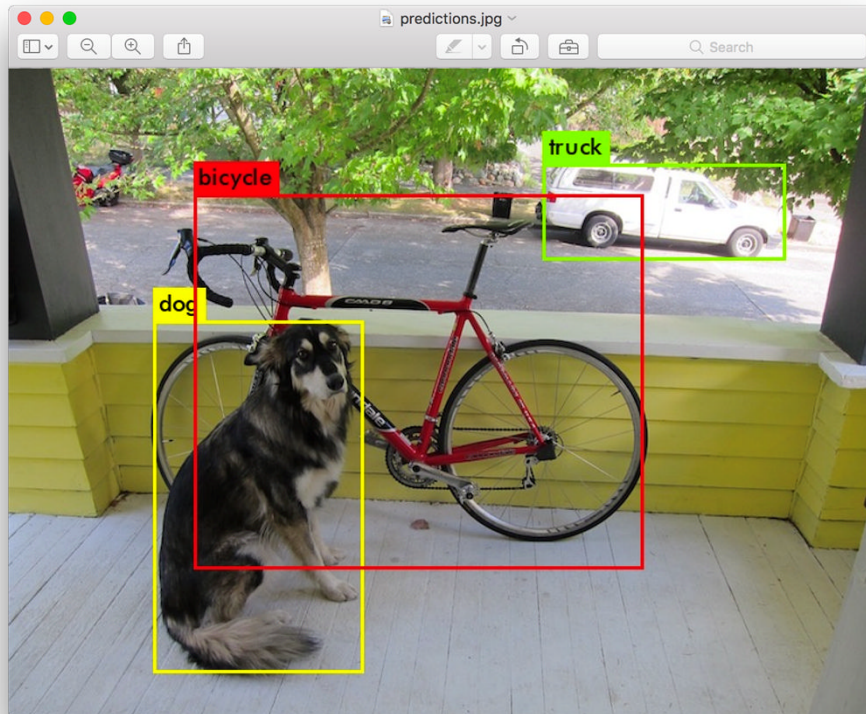
- Hundreds of papers
- More powerful visual features
- Better similarity distance
- Some significant applications in very specific domains
- ...

Semantic gap? Still there

Deep learning

- CNN for image classification
- Object detection by Region based Convolutional Networks (R-CNN)
- CNN for feature extraction and representation.
 - No more human design of visual feature.
- Generative Adversarial Network (GAN) to create a variety of realistic images corresponding to the description.
- Multimodal embedding: Deep Boltzmann Machines, Restricted Boltzmann Machines, CNN to process visual data + MLP or LSTMs to embed text features
- Siamese network (two weight-sharing networks running on two images) to model similarity function

Very impressive results



Xu, K., Ba, J., Kiros, R., Cho, K., Courville, A., Salakhutdinov, R., Zemel, R., Bengio, Y. Show, Attend and Tell: Neural Image Caption Generation with Visual Attention. International Conference on Machine Learning, 2015

Redmon, J., Divvala, S., Girshick, R., Farhadi, A. You Only Look Once: Unified, Real-Time Object Detection. IEEE Conf. on Computer Vision and Pattern Recognition (CVPR), 2016

Question

CBIR at the time of deep learning:
has deep learning closed the semantic gap?

ALLDATA 2019

Panel on Software and Data

Theme: Designing Complex Systems
Topic: Machine Learning and Visual Data

Tsan-sheng Hsu

徐讚昇

Institute of Information Science
Academia Sinica, Taiwan
tshsu@iis.sinica.edu.tw

<http://www.iis.sinica.edu.tw/~tshsu>

About me

- **Academia Sinica is THE governmental pure research laboratory in Taiwan.**
 - Have 31 institutes working on nature science, life science and social science.
 - Institute of Information Science is the computer science branch.
- **Laboratory of Massive Data Computing and Management**
 - Since the year 2000
 - Efficient algorithms for processing large data
 - Applications
 - ▷ *Data privacy*
 - ▷ *Classical board games*
 - ▷ *Simulations of disease spreading through contacts*
 - ▷ *Construction and understanding of human disease network*
- **Research and teaching**
 - Areas
 - ▷ *Algorithm design and implementation*
 - ▷ *Graph theory*
 - ▷ *Massive data computing*
 - Teach a course once per year at National Taiwan University

Points of interest (I)

- Deep learning has enjoyed lots of success right now on data with **patterns**.
 - For example:
 - ▷ *Medical images*
 - ▷ *Board games*
 - ▷ *Natural language processing*
- Discussions:
 - Does deep learning actually learn the “knowledge” underneath the data, or just tags/labels assigned?
 - Are manually/auto-converted assigned labels inevitably biased, unfair and sometimes unethical?
 - Can an explanation of the “intelligence” uncovered be easily derived?

Points of interest (II)

- Maybe to remedy the labeling problem, board game playing programs like AlphaZero use “simple” and “transparent” rules to do unsupervised learning, instead of supervised learning as in AlphaGo.
 - Go is a **complex**, not **complicated** game.
 - Go boards are “visual” data.
 - Supervised learning takes previous game logs with labels.
 - Basic rules for playing Go is simple.
 - Learn the basic rules, not the labels.
 - A great line of success for board game playing
AlphaGo (2016) → AlphaGo Zero (2017) → AlphaZero (2018)
- Discussions:
 - Are the rules of Go really simple if a board position is complex?
 - ▷ *Life and death*
 - ▷ *Avoid immediate loops (Ko), but allow longer loops*
 - Are simple rules available for very complex system?

Backup slides



Face recognition software bias



TECH \ AMAZON \ ARTIFICIAL INTELLIGENCE \

Gender and racial bias found in Amazon's facial recognition technology (again) 17

Research shows that Amazon's tech has a harder time identifying gender in darker-skinned and female faces

By James Vincent | Jan 25, 2019, 9:45am EST

f t SHARE



Illustration by Alex Castro / Th

James Vincent, Jan 25, 2019, the verge, <https://www.theverge.com/2019/1/25/18197137/amazon-rekognition-facial-recognition-bias-race-gender>

AI chat Bot bias

From Wikipedia, the free encyclopedia

This article has multiple issues. Please help **improve it** or discuss these issues on the **talk page**. *(Learn how and when to remove these template messages)* [\[show\]](#)


Tay was an [artificial intelligence chatter bot](#) that was originally released by [Microsoft Corporation](#) via [Twitter](#) on March 23, 2016; it caused subsequent controversy when the bot began to post inflammatory and offensive tweets through its Twitter account, forcing Microsoft to shut down the service only 16 hours after its launch.^[1] According to Microsoft, this was caused by [trolls](#) who "attacked" the service as the bot made replies based on its interactions with people on Twitter.^[2] It was soon replaced with [Zo](#).

Contents [\[hide\]](#)

- 1 [Background](#)
 - 1.1 [Creation](#)
 - 1.2 [Initial release](#)
 - 1.3 [Suspension](#)
 - 1.4 [Second release and shutdown](#)
- 2 [Legacy](#)
- 3 [See also](#)
- 4 [References](#)
- 5 [External links](#)

Background [\[edit\]](#)

Tay



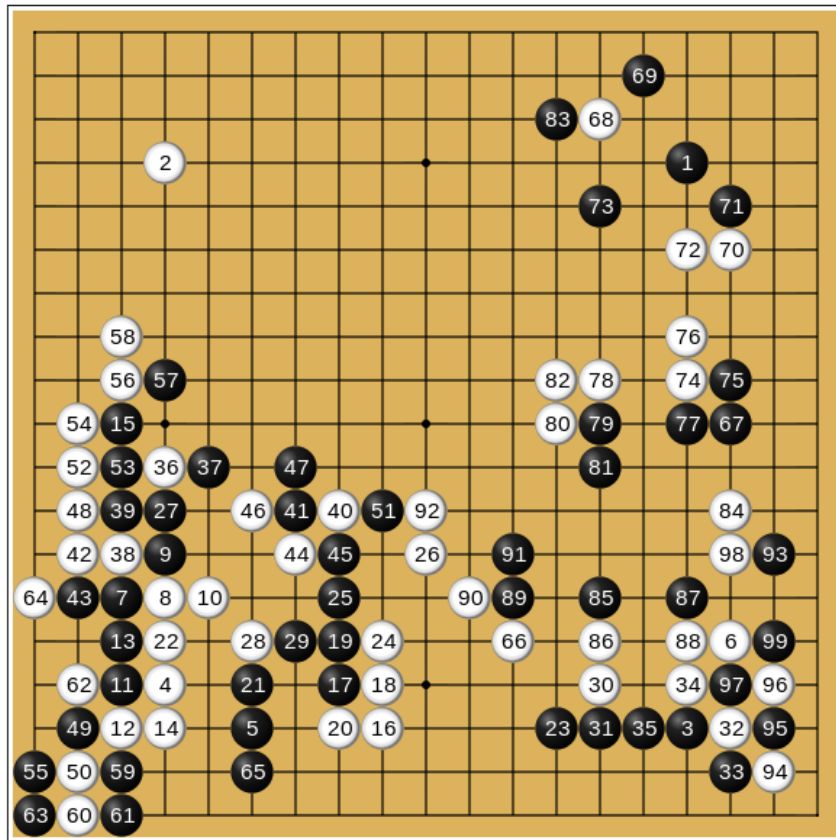
The Twitter profile picture of Tay

Developer(s)	Microsoft Research, Bing
Available in	English
Type	Artificial intelligence chatterbot
License	Proprietary
Website	tay.ai

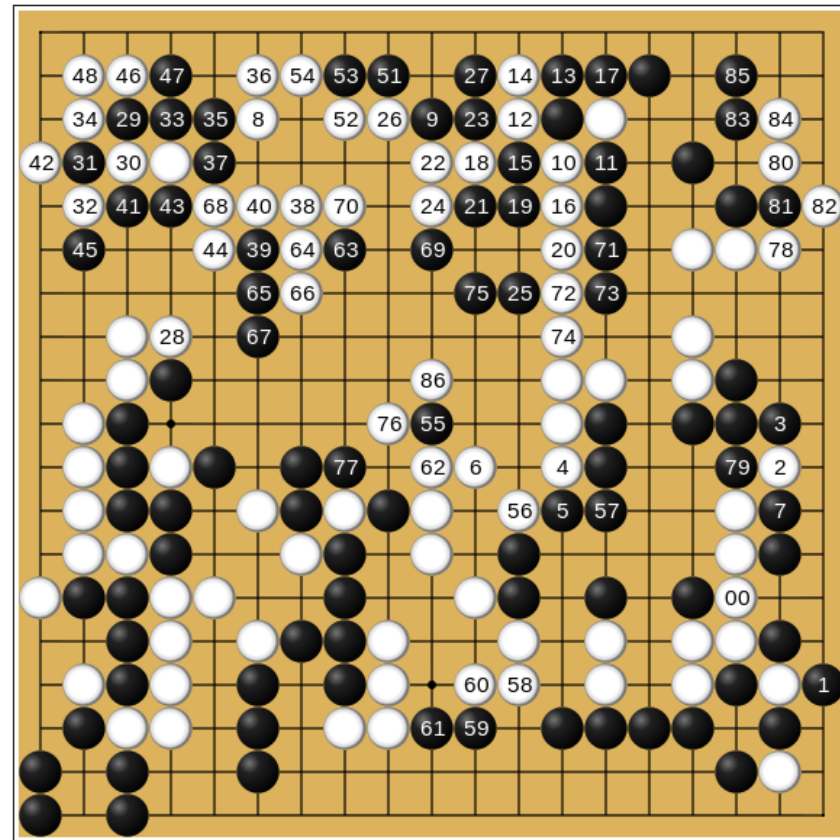
Wiki, [https://en.wikipedia.org/wiki/Tay_\(bot\)](https://en.wikipedia.org/wiki/Tay_(bot))

AlphaGo

AlphaGo Master (white) v. Tang Weixing (31 December 2016), AlphaGo won by resignation. White 36 was widely praised.



First 99 moves



Moves 100-186 (149 at 131, 150 at 130)

Wiki, <https://en.wikipedia.org/wiki/AlphaGo>

Complicated Go, 1/2 point win/Draw



長生劫, game played by 林海峰(black) vs 小松英樹 1993/9/2, Honinbo competition, Japan; <https://kknews.cc/zh-tw/sports/6ne8oxl.html>

Self-driving dilemmas

https://www.nature.com/articles/d41586-018-07135-0 80% Search

MENU nature

Self-driving car dilemmas reveal that moral choices are not universal

Survey maps global variations in ethics for programming autonomous vehicles.

Amy Maxmen



Self-driving cars are being developed by several major technology companies and carmakers. credit: VCG/Getty

PDF version

RELATED ARTICLES

Autonomous vehicles: No drivers required

Machine ethics: The robot's dilemma

Editorial: Road test

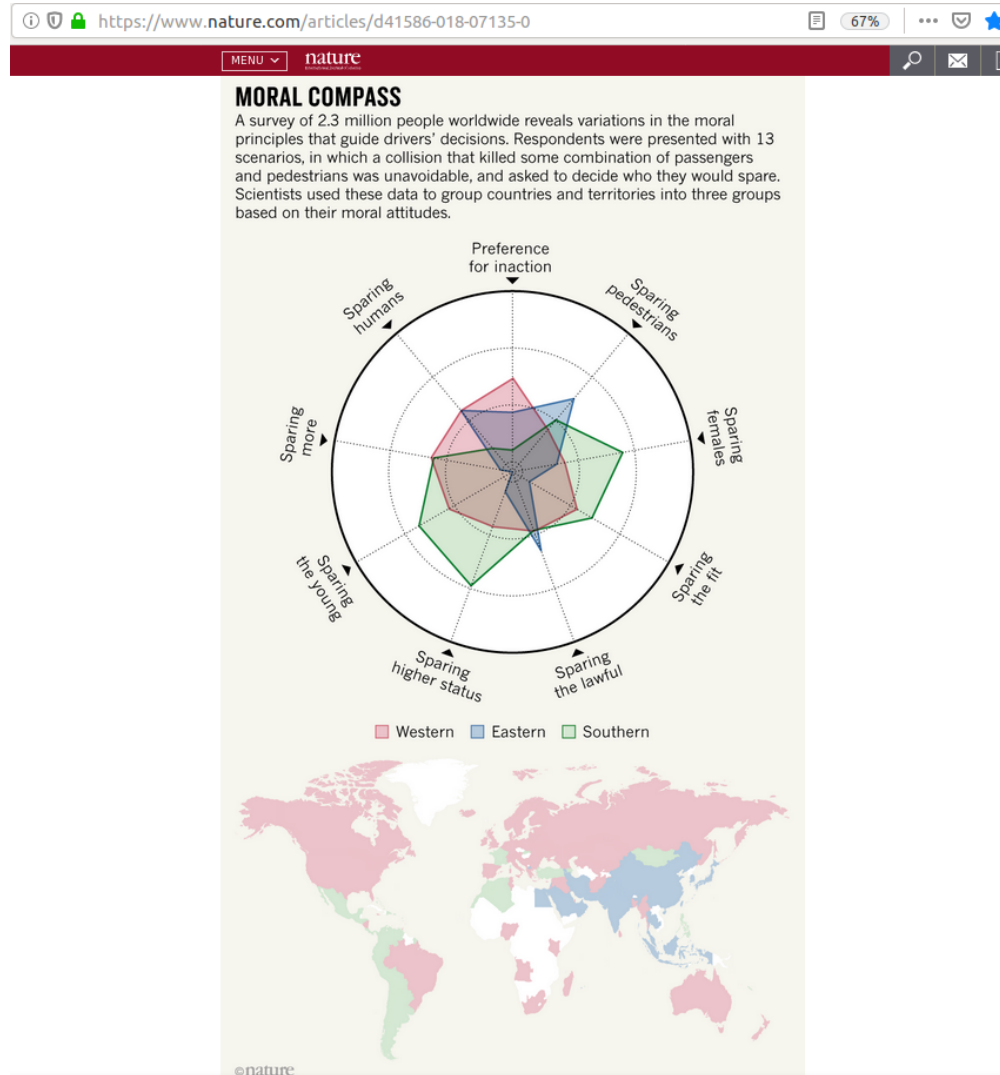
SUBJECTS

Computer science

Ethics

Amy Alexmen, 2018/10/24, Nature 562, 469-470 (2018) doi: 10.1038/d41586-018-07135-0

Moral choices are not universal



Amy Alexmen, 2018/10/24, Nature 562, 469-470 (2018) doi: 10.1038/d41586-018-07135-0